

Thyroid Quiz



Question 1

1) The National Iodine Deficiency Disorders Control Programme (NIDDCP) made a decision to iodize salt.

Which year was this decided and what do u mean by iodisation of salt?

- a) Salt with more than or equal to 15 parts per million of iodine in 1962
- b) Salt with more than or equal to 15 parts per million of iodine in 1982
- c) Salt with more than or equal to 20 parts per million of iodine in 1972
- d) Salt with more than or equal to 30 parts per million of iodine in 1992

Question 2

2) Consumptive Hypothyroidism is characterised by all except

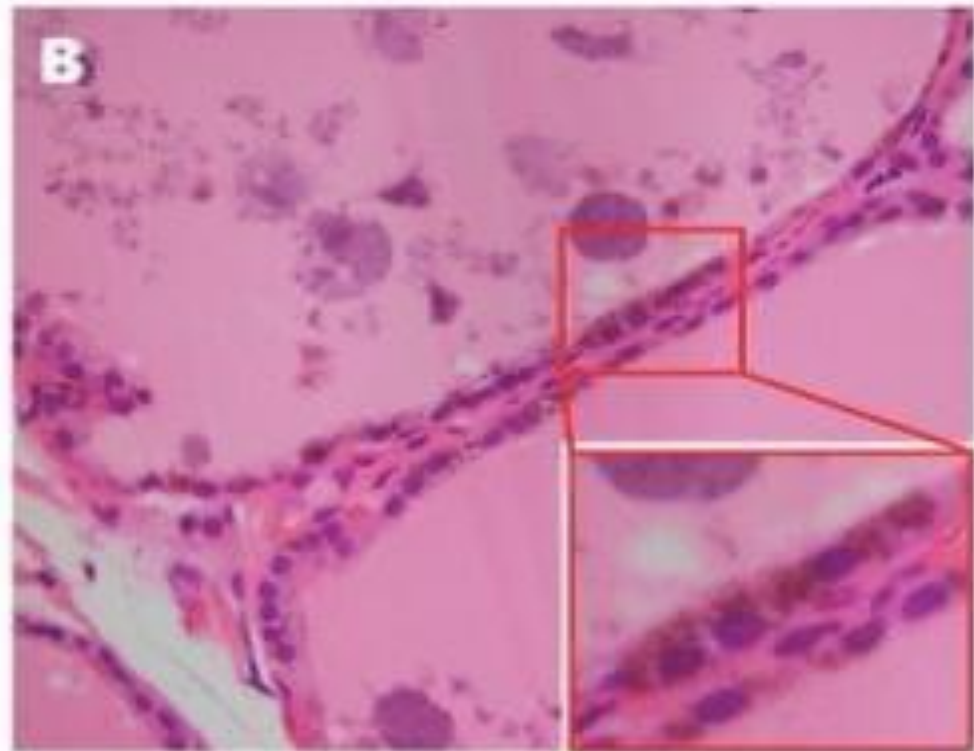
- a) High levels of D3 expression by neoplastic tissues, resulting in high rates of thyroid hormone inactivation
- b) High doses of LT_4 and/or LT_3 are required to normalize serum thyroid hormone levels.
- c) Most commonly seen in solid Tumors in adults
- d) Serum TSH screening should be done in the evaluation of patients with hemangiomas,

Question 3

3) The Diagnosis of Hashimotos encephalitis can be considered when the following three symptoms are met except,

- a) More than three months of memory deficits, altered mental status, or psychiatric symptoms.
- b) New focal neurologic deficits, unexplained new-onset seizures, CSF pleocytosis, or MRI features suggestive of AE
- (c) Reasonable exclusion of other possible causes of the condition
- (d) Elevated Titers of anti-TPO antibodies

Figure 1. (A) Intraoperative photograph showing the black discoloration of diffusely enlarged thyroid glands compared ...



Question 4

4) Black thyroid is seen with prolonged therapy with which drug except,

- a) Tetracycline antibiotics
- b) Antidepressants
- c) Lithium
- d) Ciprofloxacin

Question 5

5) This picture is seen in:

- a) Amyloid Goiter containing adipose infiltration
- b) Heterotopic adipocytes
- c) Thyroid lipoma or adenolipoma
- d) Diffuse thyroid lipomatosis

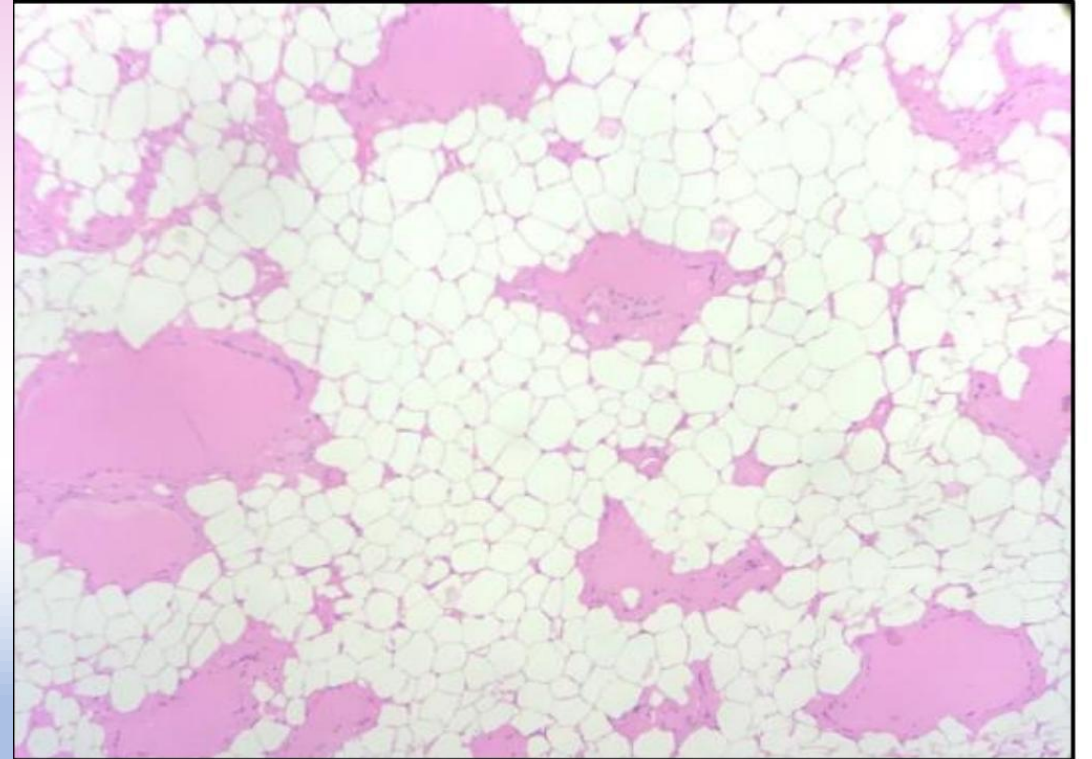


Figure 5: Microscopic picture of thyroid.

Question 6

6) The USG findings which are consistently associated with malignancy in a thyroid nodule are except:

- a) Hypoechogenicity
- b) Infiltrative, irregular, or lobulated margins
- c) Intranodular microcalcifications
- d) Wider than taller shape.

Question 7

- 7) Which cancer was downgraded to non-cancerous encapsulated follicular variant of papillary thyroid carcinoma (EFVPTC) ?
- a) Non invasive follicular thyroid neoplasm with papillary-like nuclear features” or NIFTP
 - b) Hurthle cell carcinoma
 - c) Thyroid lymphoma
 - d) Papillary microcarcinoma

Question 8

8) MCT8 deficiency is a rare genetic leukoencephalopathy caused by a defect of thyroid hormone transport across cell membranes.

Most common movement disorder seen is :

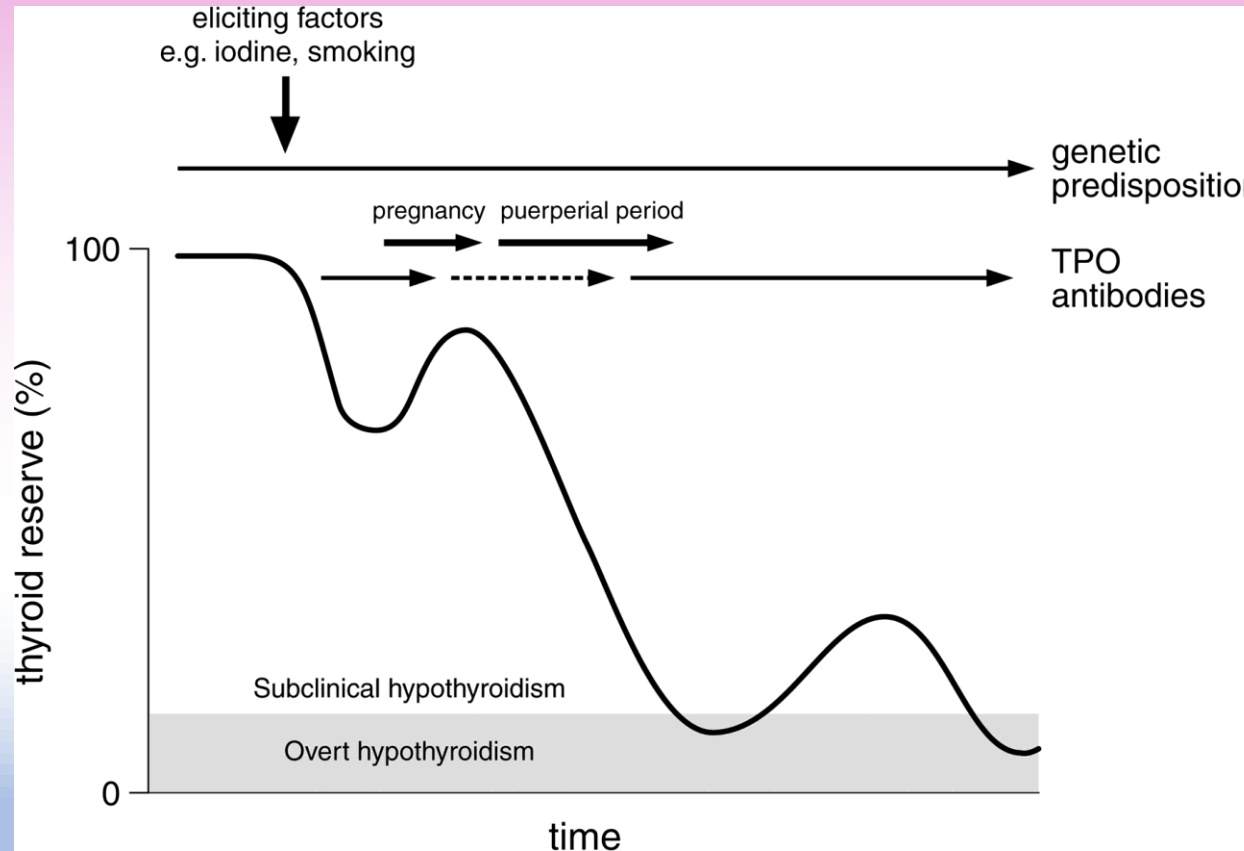
- a) Dystonia
- b) Hypokinesia
- c) Paroxysmal movement disorders
- d) Chorea

Question 9

9) Recurrent thyroiditis is uncommon in:

- a) Reidel's thyroiditis
- b) Hamburger thyrotoxicosis
- c) Silent thyroiditis
- d) Thyroid amyloidosis

Fig. 5 A scheme depicting the gradual loss of thyroid reserve over time (often years) due to thyroid autoimmune ...



Question 10

10) After a first episode of postpartum thyroiditis:

- a) The chance of recurrence after a subsequent pregnancy is 70% in women who are TPO antibody positive.
- b) The chance of recurrence after a subsequent pregnancy is 50% in women who are TPO antibody positive.
- c) The chance of recurrence after a subsequent pregnancy is 25% in women who are TPO antibody positive.
- d) The chance of recurrence after a subsequent pregnancy is 40% in women who are TPO antibody positive.

•

THANK YOU

Question 1

1) The National Iodine Deficiency Disorders Control Programme (NIDDCP) made a decision to iodize salt.

Which year was this decided and what do u mean by iodisation of salt?

- a) Salt with more than or equal to 15 parts per million of iodine in 1962
- b) Salt with more than or equal to 15 parts per million of iodine in 1982**
- c) Salt with more than or equal to 20 parts per million of iodine in 1972
- d) Salt with more than or equal to 30 parts per million of iodine in 1992

Question 2

2) Consumptive Hypothyroidism is characterised by all except

- a) High levels of D3 expression by neoplastic tissues, resulting in high rates of thyroid hormone inactivation
- b) High doses of LT_4 and/or LT_3 are required to normalize serum thyroid hormone levels.
- c) Most commonly seen in solid Tumors in adults**
- d) Serum TSH screening should be done in the evaluation of patients with hemangiomas,

Question 3

3) The Diagnosis of Hashimotos encephalitis can be considered when the following three symptoms are met except,

- a) More than three months of memory deficits, altered mental status, or psychiatric symptoms.**
- b) New focal neurologic deficits, unexplained new-onset seizures, CSF pleocytosis, or MRI features suggestive of AE
- (c) Reasonable exclusion of other possible causes of the condition
- (d) Elevated Titers of anti-TPO antibodies

Question 4

4) Black thyroid is seen with prolonged therapy with which drug except,

- a) Tetracycline antibiotics
- b) Antidepressants
- c) Lithium
- d) Ciprofloxacin**

Question 5

5) This picture is seen in:

- a) Amyloid Goiter containing adipose infiltration
- a) Heterotopic adipocytes
- c) Thyroid lipoma or adenolipoma
- d) Diffuse thyroid lipomatosis**

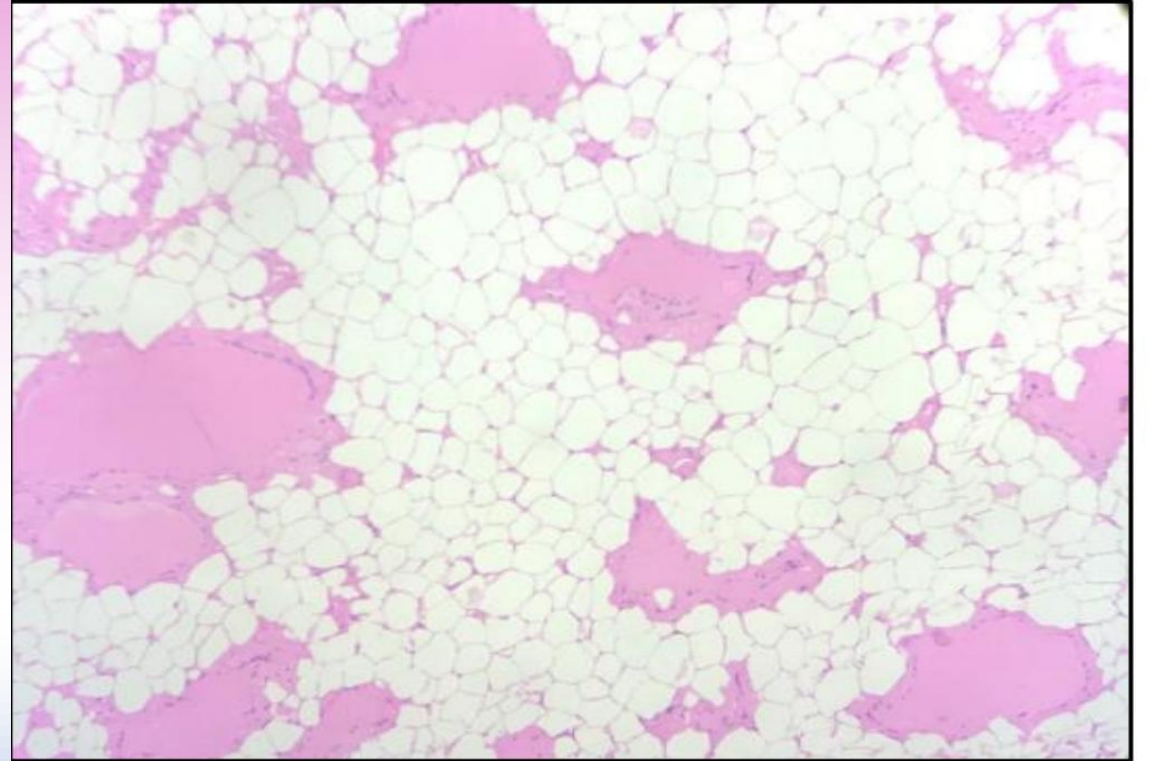


Figure 5: Microscopic picture of thyroid.

Question 6

6) The USG findings which are consistently associated with malignancy in a thyroid nodule are except:

- a) Hypoechogenicity
- b) Infiltrative, irregular, or lobulated margins
- c) Intranodular microcalcifications
- d) **Wider than taller shape.**

Question 7

- 7) Which cancer was downgraded to non-cancerous encapsulated follicular variant of papillary thyroid carcinoma (EFVPTC) ?
- a) **Non invasive follicular thyroid neoplasm with papillary-like nuclear features” or NIFTP**
 - b) Hurthle cell carcinoma
 - c) Thyroid lymphoma
 - d) Papillary microcarcinoma

Question 8

8) MCT8 deficiency is a rare genetic leukoencephalopathy caused by a defect of thyroid hormone transport across cell membranes.

Most common movement disorder seen is :

- a) Dystonia
- b) **Hypokinesia**
- c) Paroxysmal movement disorders
- d) Chorea

Question 9

9) Recurrent thyroiditis is uncommon in:

- a) Reidel's thyroiditis
- b) Hamburger thyrotoxicosis
- c) **Silent thyroiditis**
- d) Thyroid amyloidosis

Question 10

10) After a first episode of postpartum thyroiditis:

- a) The chance of recurrence after a subsequent pregnancy is 70% in women who are TPO antibody positive.**
- b) The chance of recurrence after a subsequent pregnancy is 50% in women who are TPO antibody positive.
- c) The chance of recurrence after a subsequent pregnancy is 25% in women who are TPO antibody positive.
- d) The chance of recurrence after a subsequent pregnancy is 40% in women who are TPO antibody positive.